

## quality standards

---

### Ceiling

---

#### Skim Coats

#### False Ceiling

#### 1) Finishing

- No stain marks
- Consistent colour tone
- No patchy surface

#### 2) Alignment & Evenness

- Overall surface should be smooth, even, not wavy
- Straightness of Corners

#### 3) Crack and Damages

- No visible damage e.g spalling, leaks, cracks, etc

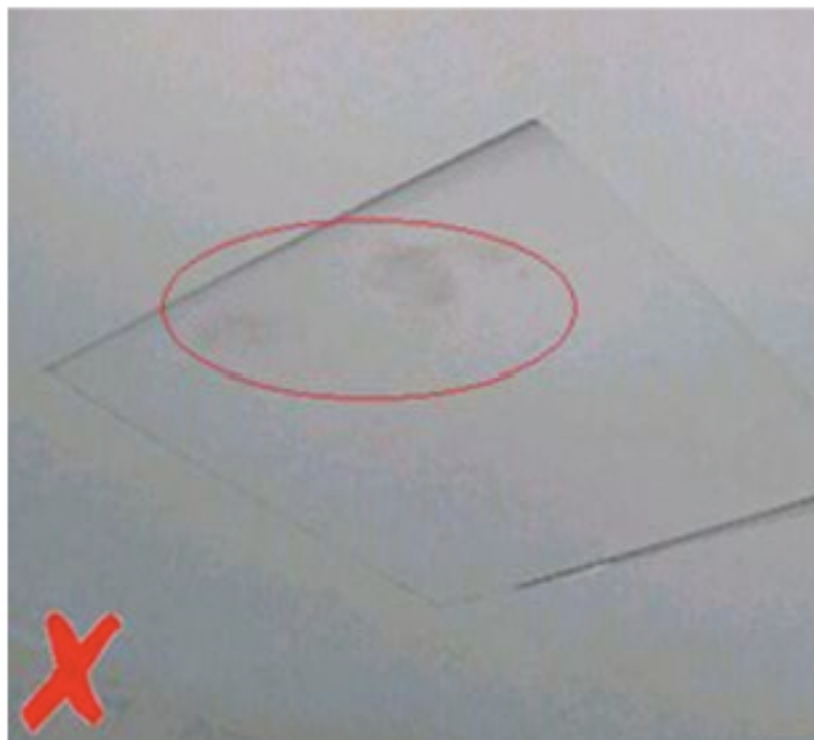
#### 4) Roughness

- No rough surface

#### 5) Jointing

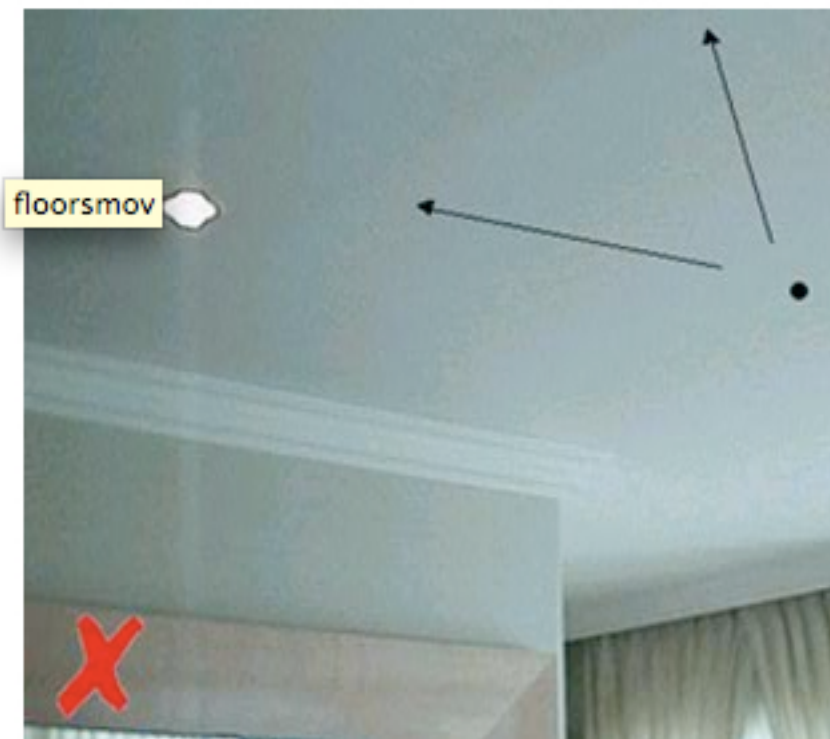
- Consistent, aligned and neat

## false ceiling



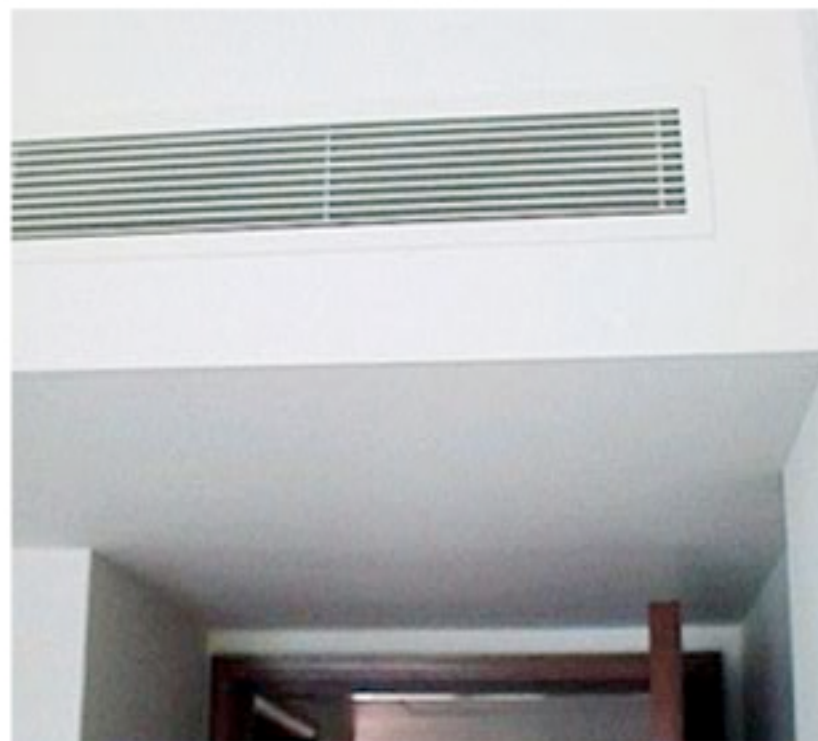
Stain marks and  
access panel unable  
to close properly

false ceiling



Uneven

## false ceiling



Chipped at surfaces or  
corners should not be seen

false ceiling

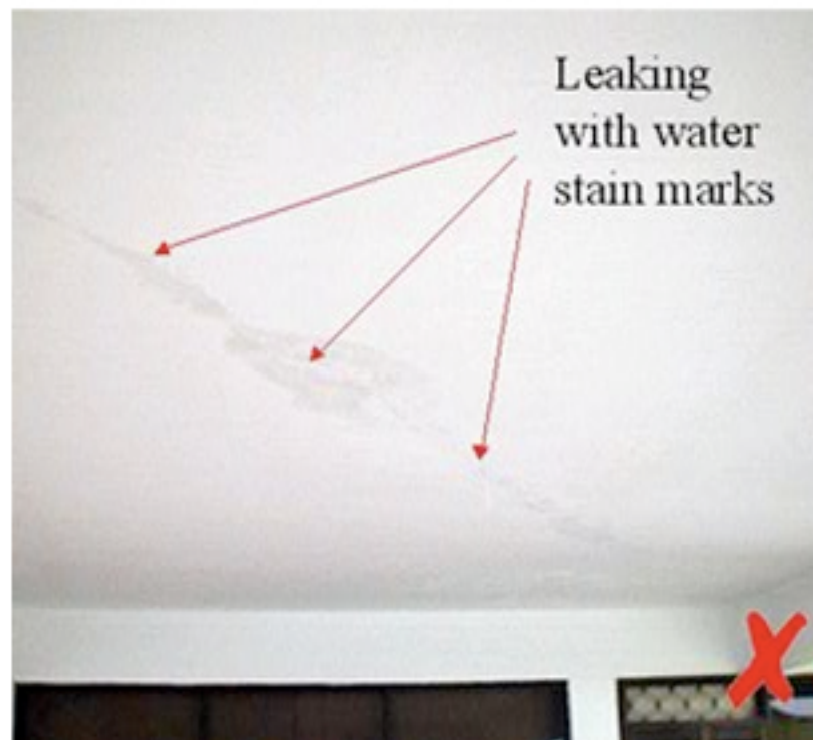


## skim coats



Overall surface should be even

## skim coats



No spalling, leaks or stains

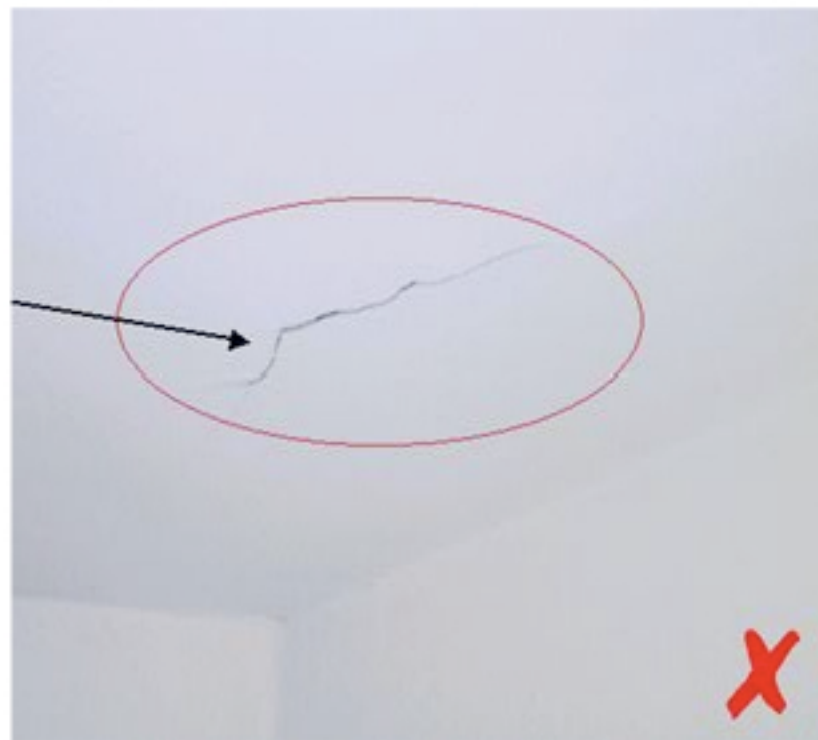
## skim coats



Painting with good opacity and free from defects like peeling, blister and chalkiness, etc

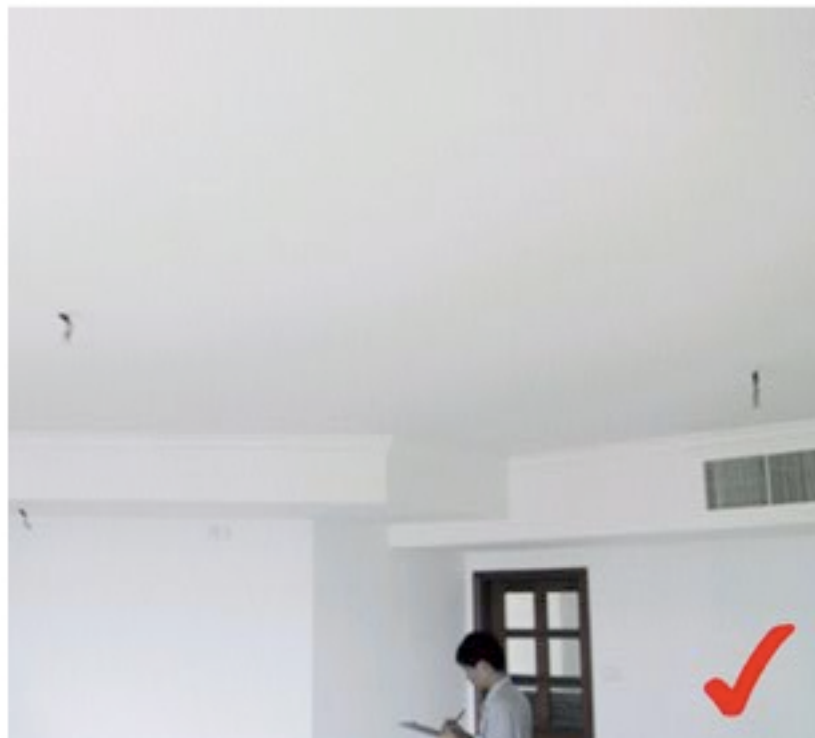


## skim coats



No visible crack from a distance of 1.5m

## skim coats



No visible damage